

Stroke Imaging

Imaging is essential for the diagnosis of stroke to exclude hemorrhage, assess the degree of brain injury and identify the vascular lesion.

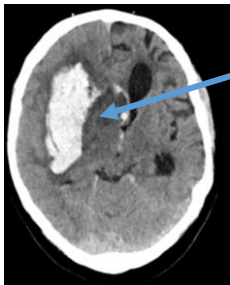
All patients require imaging through computerized tomography (CT) to support decision making towards treatment.

CT

CT: computerized tomography

Non-contrast head

Identifies if stroke is hemorrhagic or ischemic



Hemorrhagic Stroke



Ischemic Stroke

CTA

CTA: computerized tomography angiography

Contrast dye power injected

Identifies large vessel occlusions and carotid stenosis



Blockage

CTP

CTP: computerized tomography perfusion

Contrast dye power injected

Aids in patient treatment selection through identifying brain tissue status

