

LVO Screening Tools

Large Vessel Occlusion (LVO) screening tools are simple, rapid and reliable for recognizing large vessel occlusions in severe strokes which guides clinical decision making in the eligibility for Endovascular Treatment (EVT).

Rationale

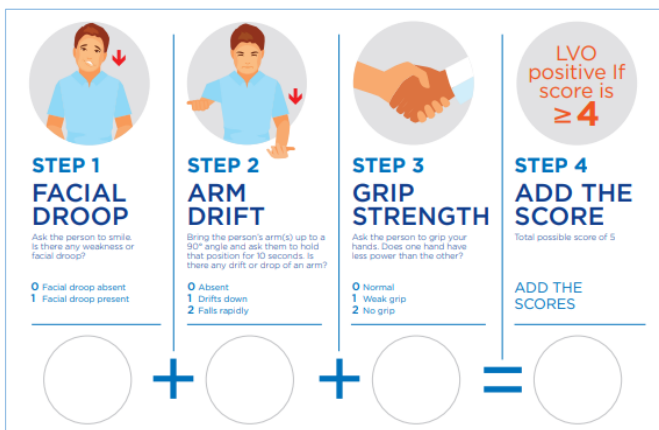
Patients with stroke symptoms and a last known well (LKW) 0-24 hours need to be screened for a LVO. Highly selected patients may benefit from EVT up to 24 hours. Stroke severity tools triage patients to the nearest EVT capable site.

The Northwestern Ontario stroke system is supported by two LVO tools:
LAMS and **ACT-FAST**

Despite utilizing different tools, the result is the same.
 The tools help determine if a patient may have a LVO.

LAMS

- Screens patients with LKW 0-6 hours
- Three item process, scoring system
- Yields numerical results concluding in positive or negative screen
- Utilized in pre-hospital EMS setting



Acronyms: LAMS Los Angeles Motor Scale ;
 ACT-FAST Ambulance Clinical Triage for Acute Stroke Treatment
 Source: strokebestpractices.ca
 v0.1 Sept 2022

ACT-FAST

- Screens patients with LKW 0-24 hours
- Two step process, results concluding in positive or negative screen
- Utilized in hospital ED setting

