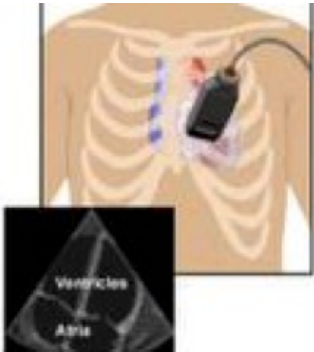


TEE (Transesophageal Echocardiogram)



How to prepare for a TEE?

- Nothing to eat or drink for 12 hours before your appointment time.

What is a TEE?

A TEE is a special type of echocardiogram (ultrasound of the heart). It is usually done when your doctor wants to look more closely at your heart structures and chambers of the heart. During a TEE, a transducer is placed in the esophagus (the pipe that connects the mouth to the stomach) that uses sound waves to produce images of your heart.



What will happen during a TEE?

You will be reporting to Surgical Day Care the morning of your TEE. You will have an intravenous inserted into your arm as you will be receiving some sedation while you have your TEE done. You will be transferred to the Echo Lab for your test. We will

be monitoring your heart rate, blood pressure, and oxygen levels at all times during your procedure. There will be a Nurse, Cardiologist and Echo Technologist performing the procedure.

Lying on your left side, a small tube will be passed gently through your mouth and down your esophagus. It will not interfere with your breathing. Images will be taken and then the transducer is removed easily.

The TEE test itself takes 20-40 minutes.

What will happen after the TEE?

After your TEE, you will be moved back to Surgical Day Care to let the sedation wear off. When it is safe to swallow, you will be allowed to eat, drink and take your medications as normal. You will need to arrange a safe ride home as you will not be allowed to drive for 24 hours.

For 24 hours post TEE:

- Do not engage in any activity that requires alertness or coordination. This includes no driving, operating power tools, or riding a bicycle.
- No swimming, hot tubs, or baths;
- Remain in the company of friends/family, or attendant;
- Do not make any important decisions such as signing contracts, legal documents important commitments;
- Do not consume alcohol.

The TEE report will be sent to your physician. The results will be given to you by your physician.