

# What is the difference between a person who is “deaf,” “Deaf,” or “hard of hearing”?

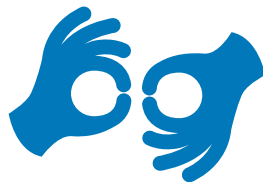
The Deaf, deaf, and hard of hearing community is diverse. There are variations in the cause and degree of hearing loss, age of onset, educational background, communication methods, and how individuals feel about their hearing loss.

In order to ensure that services can be provided to all patients equally, please be aware of what type of communication is required and preferred by each individual.



## Culturally Deaf persons

- Culturally Deaf (capital “D”) persons are members of a cultural/linguistic group whose language is a signed language i.e. American Sign Language (ASL), Langues de Signes Quebecois (LSQ).
- The members of this group have inherited their sign language, use it as a primary means of communication among themselves, and hold a set of beliefs about themselves and their connection to the larger society.
- Culturally Deaf person’s first language is a signed language and therefore signed language interpretation services are required.
- The printed use of a spoken language will vary depending on the individual and situation. Culturally Deaf persons do not read lips.
- Although this symbol is not universal, it is widely acceptable to use to identify that ASL/LSQ interpreting services are available or required:



## Persons who are deaf, hard of hearing or have hearing loss

- People who are hard of hearing or deafened are those that have a loss of hearing sound that can range from mild to profound and whose language is a spoken language i.e. English, French.
- “Hard-of-hearing” can denote a person with a mild-to-moderate hearing loss, can often hear some sounds but may not be able to understand speech. Or it can denote a deaf person who doesn’t have any cultural affiliation with the Deaf community. Or both.
- People with hearing loss may use speech, lip reading, speech reading, reading or a print transcriber to communicate.
- The ‘ear’ symbol is commonly used for persons who are deaf (lower case ‘d’), deafened or have hearing loss:



### To book an ASL/LSQ interpreter contact Ontario Interpreting Services at:

Monday to Thursday 8:00 am to 8:00 pm  
Frid 8:00 am to 5:00 pm  
Phone: 1-855-656-3748  
Email: requests@oischs.ca  
Fax: 1-855-656-3750

Emergency Interpreting Services  
(24 hours/day, 7 days/week)  
Phone: 1-866-256-5142  
Email: ois@answerplus.ca  
SMS/Text: 1-905-971-0564

healthy  
together

